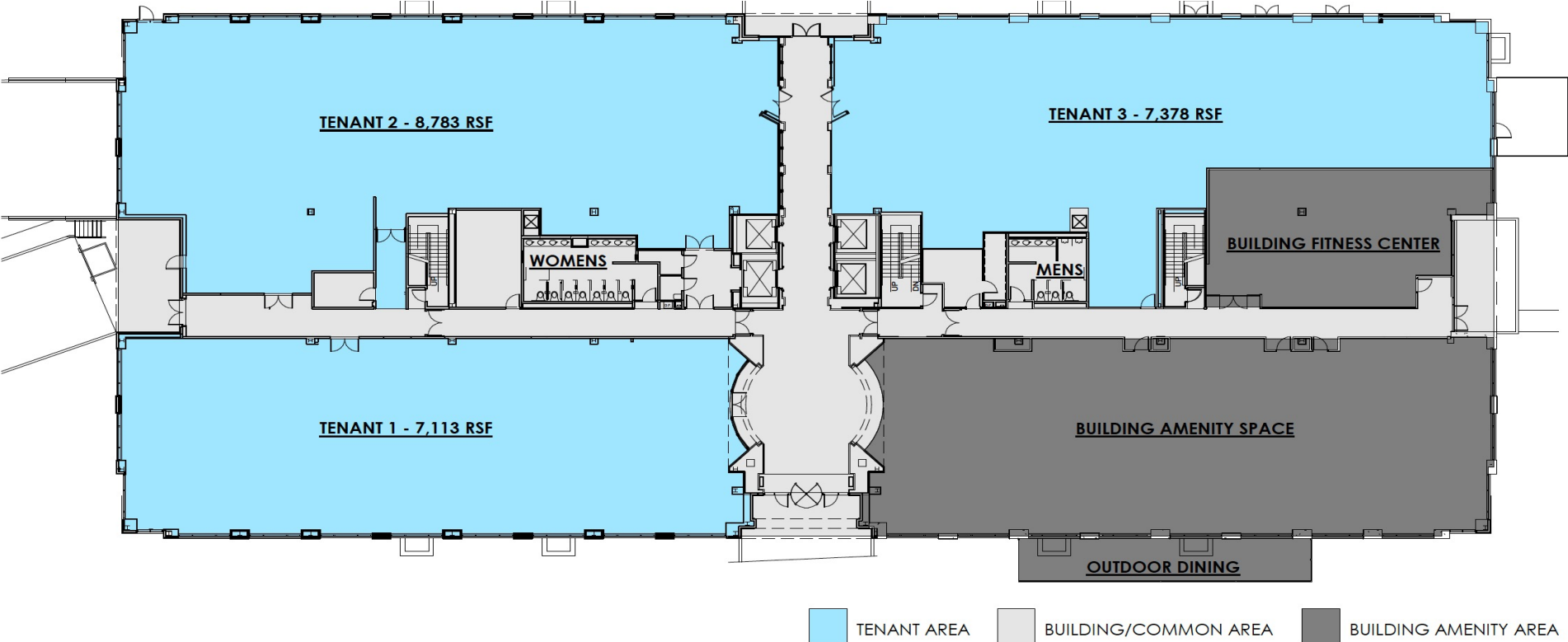


100 Kimball Drive, Parsippany, NJ

First floor



For further information, please contact:

Jeffrey L. Heller, SIOR, Principal & Managing Director
D +1 973 753 1100 | C +1 973 699 4987
jeff.heller@avisonyoung.com

William E. McCaffrey, Principal
D +1 973 753 1102 | C +1 201 826 8861
william.mccaffrey@avisonyoung.com

Owned by:



Leased by:

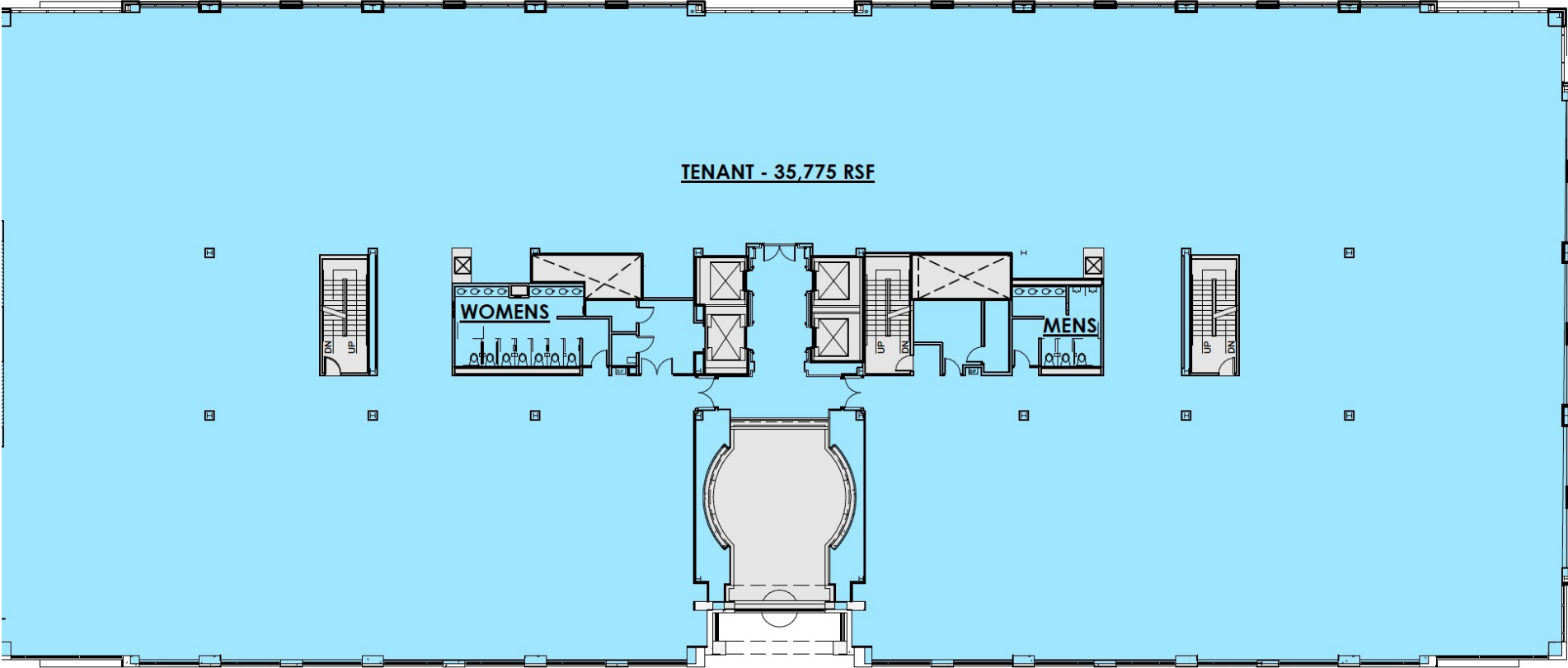


100 Kimball Drive, Parsippany, NJ

Second floor



TENANT - 35,775 RSF



TENANT AREA BUILDING/COMMON AREA

For further information, please contact:

Jeffrey L. Heller, SIOR, Principal & Managing Director
D +1 973 753 1100 | C +1 973 699 4987
jeff.heller@avisonyoung.com

William E. McCaffrey, Principal
D +1 973 753 1102 | C +1 201 826 8861
william.mccaffrey@avisonyoung.com

Owned by:

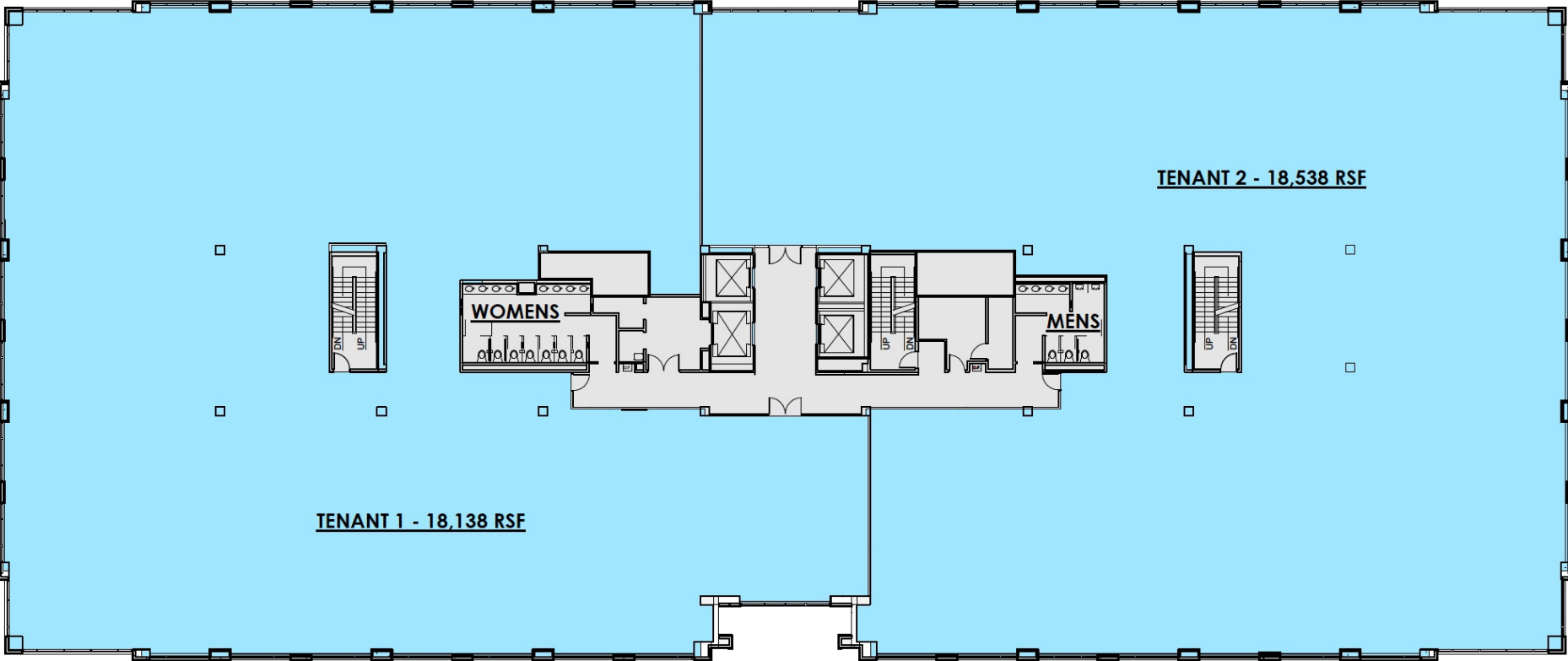


Leased by:



100 Kimball Drive, Parsippany, NJ

Third floor



TENANT AREA BUILDING/COMMON AREA

For further information, please contact:

Jeffrey L. Heller, SIOR, Principal & Managing Director
D +1 973 753 1100 | C +1 973 699 4987
jeff.heller@avisonyoung.com

William E. McCaffrey, Principal
D +1 973 753 1102 | C +1 201 826 8861
william.mccaffrey@avisonyoung.com

Owned by:

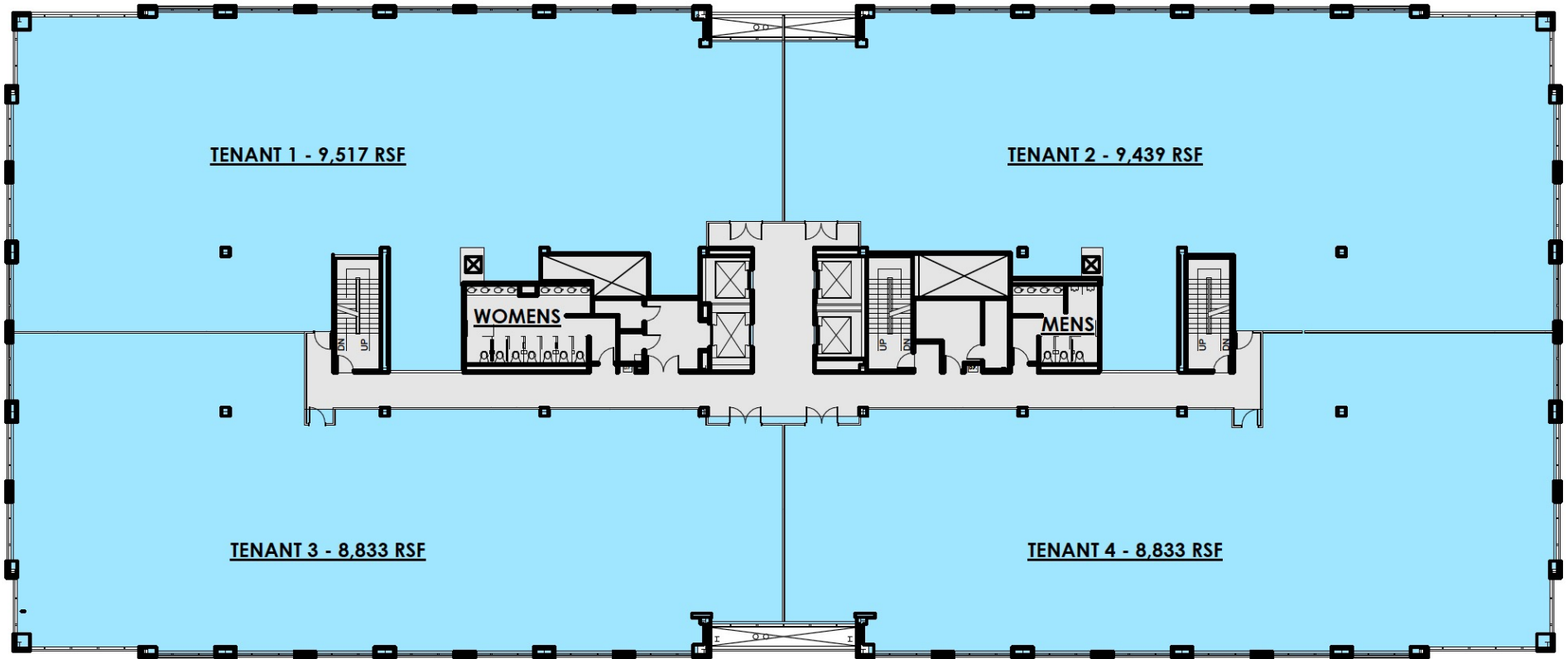


Leased by:



100 Kimball Drive, Parsippany, NJ

Fourth floor



For further information, please contact:

Jeffrey L. Heller, SIOR, Principal & Managing Director
D +1 973 753 1100 | C +1 973 699 4987
jeff.heller@avisonyoung.com

William E. McCaffrey, Principal
D +1 973 753 1102 | C +1 201 826 8861
william.mccaffrey@avisonyoung.com

Owned by:

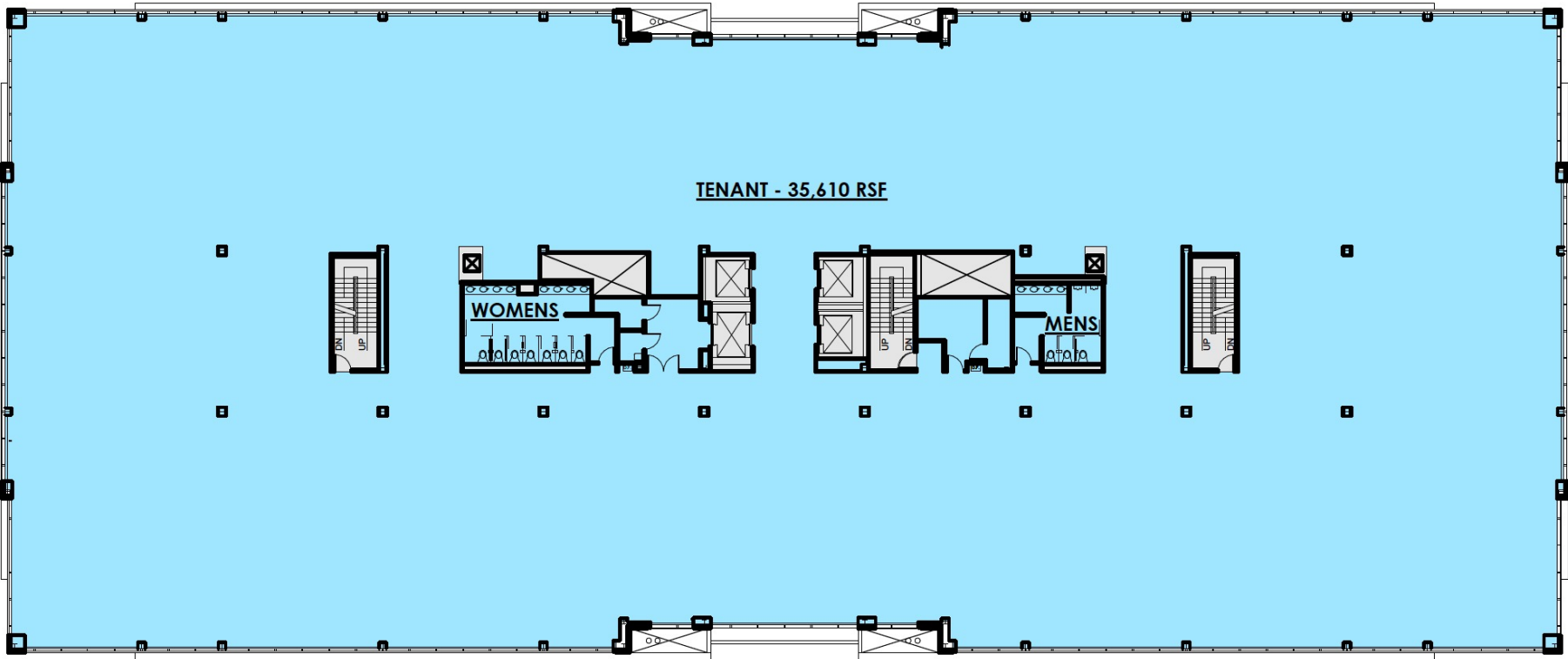


Leased by:



100 Kimball Drive, Parsippany, NJ

Fifth floor



TENANT AREA BUILDING/Common Area

For further information, please contact:

Jeffrey L. Heller, SIOR, Principal & Managing Director
D +1 973 753 1100 | C +1 973 699 4987
jeff.heller@avisonyoung.com

William E. McCaffrey, Principal
D +1 973 753 1102 | C +1 201 826 8861
william.mccaffrey@avisonyoung.com

Owned by:



Leased by:

